

Jumper settings for Kerber Applied Research for normal operation and External Composite Input enabled. Also, modifications required to allow for composite loop though to allow for local insertion of audio.

Using jumpers provided on board, the Kerber Applied Research tuner module can be set to allow for external composite input on the rear panel of the unit to be active.

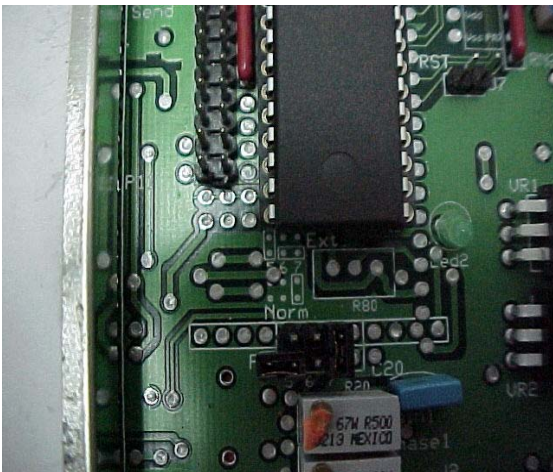
Identify the type of card as shown below. Either the older version (GoRx2 C 97) or the newer version (GoRx3 C 05) has the ability to do this.



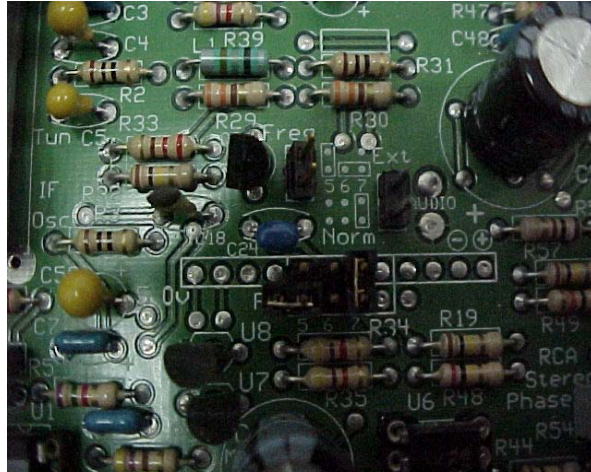
New Version

Old Version

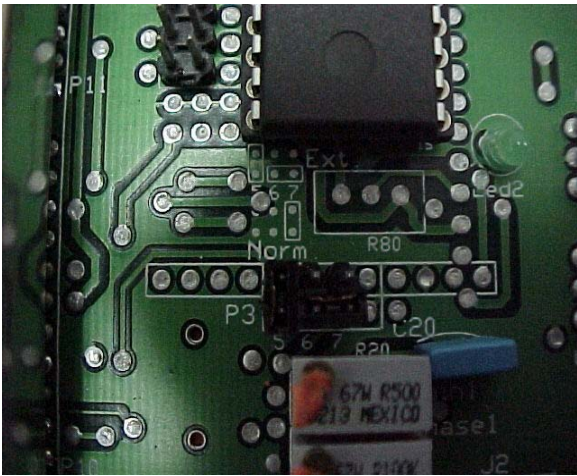
On the new version, locate P3 in the center of the board and change the jumper settings as shown in the photo's below. Note which jumper setting is for each operation as listed below each picture.



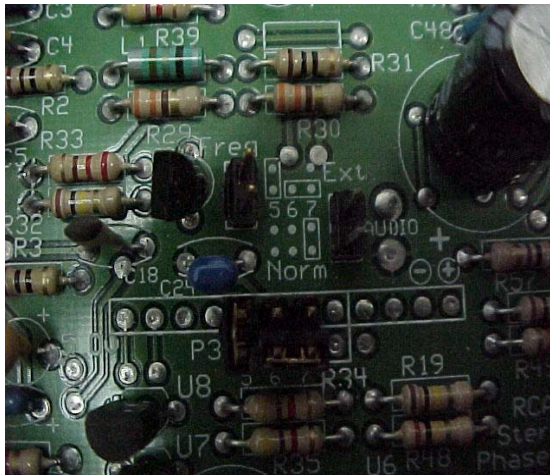
Normal operation – GoRx3 C 05
On P3; #5 is off, #6 is off, # 7 is on



Normal operation – GoRx2 C 97
On P3; #5 is off, #6 is off, # 7 is on



External Composite Input – GoRx3 C 05
On P3; #5 is on, #6 and # 7 is jumpered
across towards the front of the unit.



External Composite Input – GoRx2 C 97
On P3; #5 is on, #6 and # 7 is jumpered
across towards the front of the unit.

Notice that each board does have silkscreened on the board the jumper settings next to the jumpers themselves (towards the rear of the unit). They are labeled “Norm” for normal operation and “Ext” for external composite input.

For local insertion ability, 1 wire needs to be moved. It is the blue wire that is connected to the SCA board. Move it from it’s current location (near the bottom corner of the board) to the closest BNC connector used as the SCA input as shown in the second picture below. NOTE : This will NOT allow for future SCA inputs if the unit is configured as a transmitter at a later date.



Blue wire before modification



Blue wire moved to BNC connector

This now makes the BNC that the blue wire is connected to the COMPOSITE OUTPUT.

The COMPOSITE INPUT is still the BNC connector labeled “Comp Input”. You now can use your equipment to “break” into the composite line to insert local content. NOTE: There is no pilot transmitting while the external source is in use unless your source for local content is a composite source that contains a pilot signal. It will still function fine this way. Also, there is no limiting on the composite line so use caution when setting levels to be certain overmodulation does not occur.